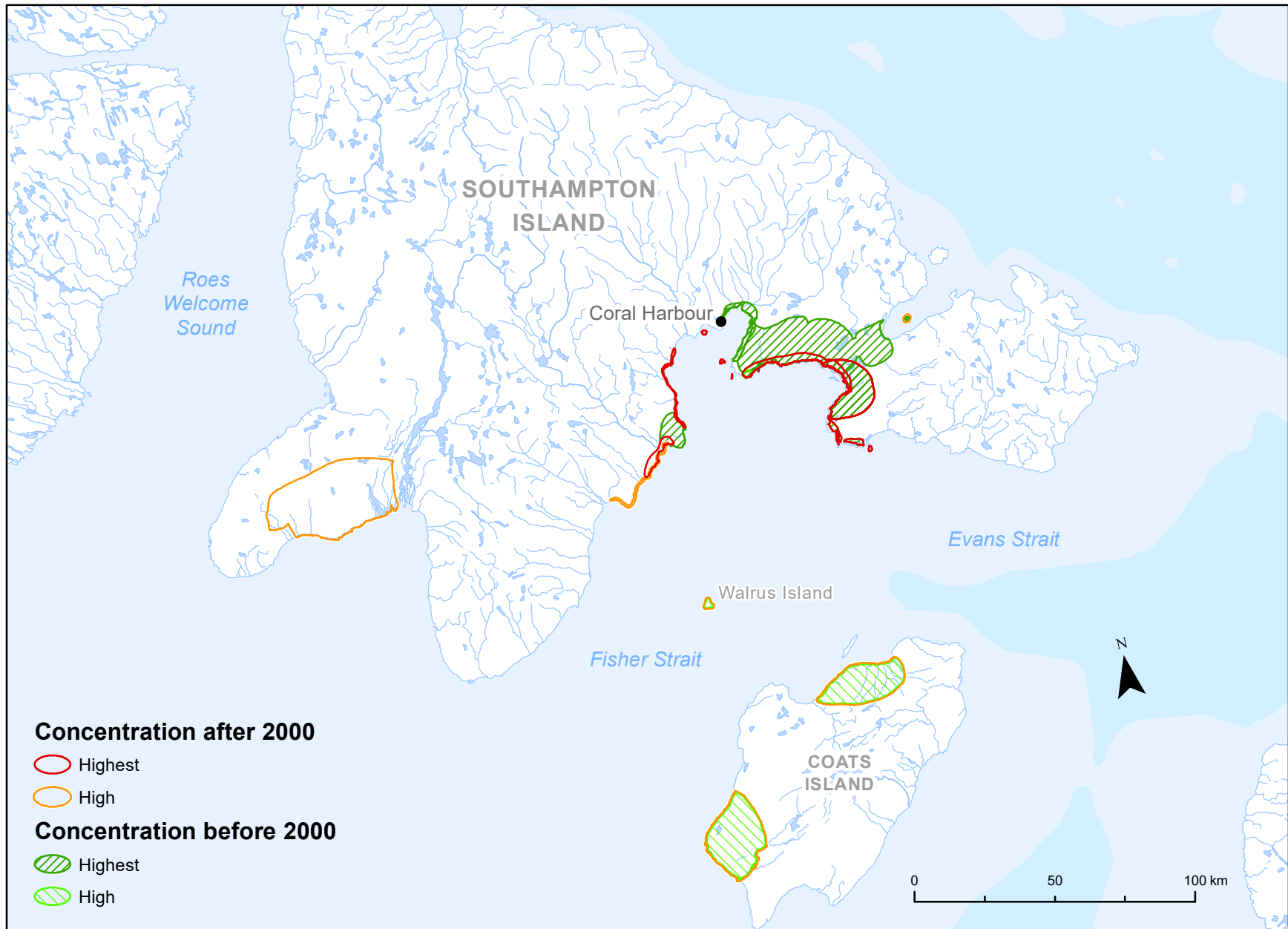


# High concentration areas of shorebirds (current and past)



## Notes:

1. The above map represents information provided by 21 participants.
2. Data includes Whimbrels, sandpipers, plovers and other shorebirds.

## Legend:

- Highest = Areas identified for highest shorebird concentration by one or more participants out of all the areas of high shorebird concentration identified by the same participant(s).
- High = Areas identified for high shorebird concentration by one or more participant(s).